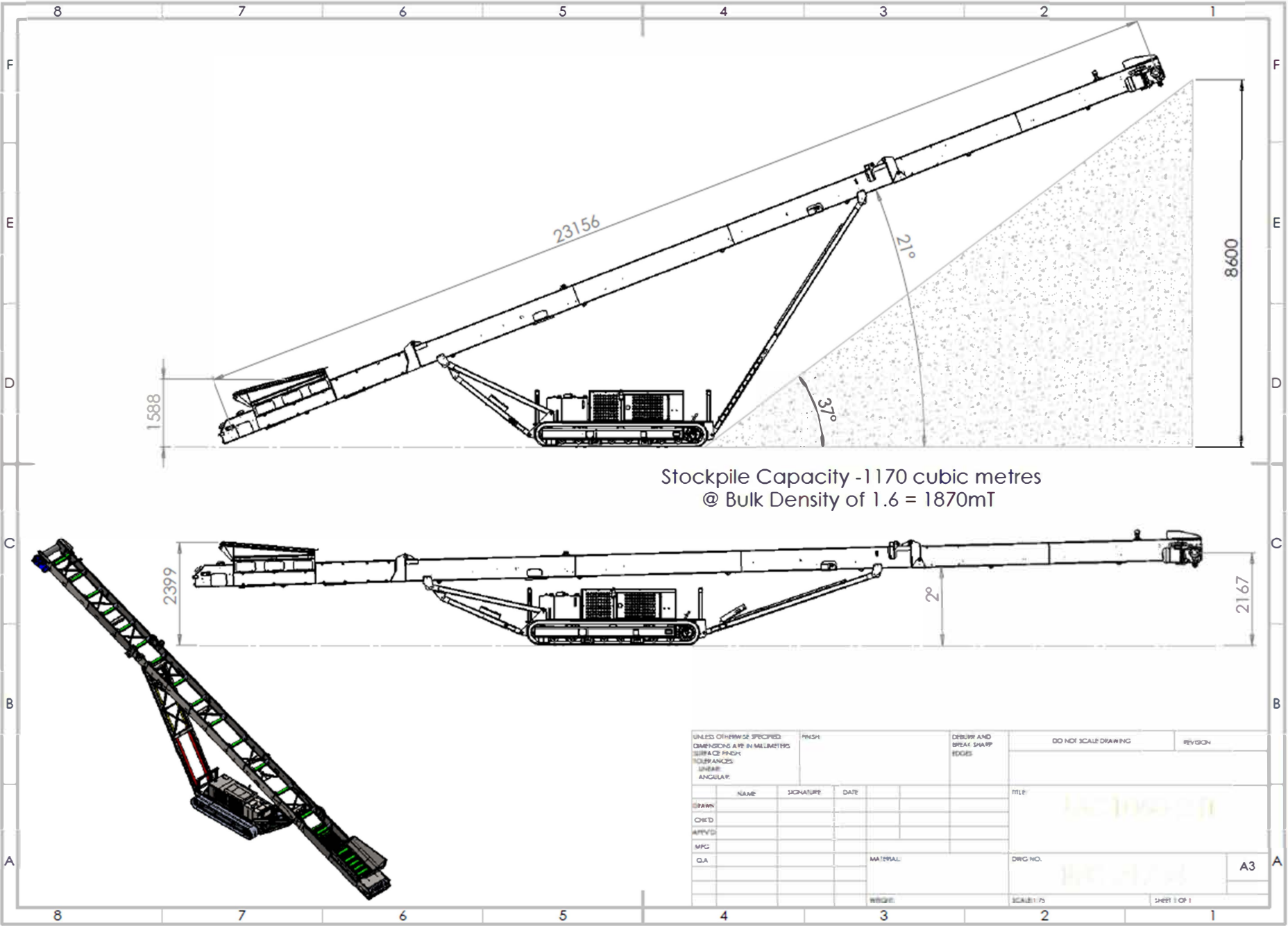




80ft TRACK  
CONVEYOR  
42 INCH BELT



Stockpile Capacity - 1170 cubic metres  
 @ Bulk Density of 1.6 = 1870mT

UNLESS OTHERWISE SPECIFIED DIMENSIONS ARE IN MILLIMETERS SURFACE FINISH TOLERANCES LINEAR ANGULAR			FINISH	DESURE AND BREAK SHARP EDGES	DO NOT SCALE DRAWING	REVISION
DRAWN	NAME	SIGNATURE	DATE		TITLE	
CHECKED					LADING 20	
APPROVED						
MFC					DWG NO.	
QA				MATERIAL		A3
				WELDER	SCALE: 1:5	SHEET 1 OF 1



### **Heavy Duty Construction**

Constructed from 5mm thick MS plate designed in 500mm deep section to give added stability and to withstand the rigours of heavy duty operation.

### **Conveyor**

The conveyor is constructed in 3 sections , the tail section includes a generous feed hopper and the head section includes the conveyor drive, consisting of a Sauer-Danfoss hydraulic motor and rubber lagged drive pulley.

### **Diesel-Hydraulic Power Unit**

The conveyor is powered by a 55 kw Diesel Engine coupled to a tandem hydraulic pump giving sufficient oil flow to drive both the conveyor at maximum output and to operate the crawler tracks.

### **Undercarriage**

The undercarriage consists of the hydraulically operated crawler tracks together with an adjustable support trestle arrangement, which allows variation in both feed and discharge heights.

### **Hydraulic Folding Mechanism**

The folding mechanism of the conveyor head section and tail sections allows for quick site set up and provides a flexible approach to transport of the unit. The hydraulic folding is designed so that the hydraulic cylinder piston rods are fully protected when the machine is operational.

### **Emergency Stop System**

Every MC1050-24T Track Conveyor is equipped from the factory with an emergency stop system that will render the plant inoperable when activated, providing added safety for the operator.



### **Standard Features**

- Crawler Track Movement
- 55 kw Diesel-Hydraulic Drive
- 1050mm (42") wide 3 ply belt
- Hydraulic Folding on Head Section
- Hydraulic Folding of Tail Section
- Hydraulic Raise and Lower
- Single Hydraulic Motor Drive (Sauer-Danfoss)

### **Options**

- Heavy Duty Belt
- Conveyor Belt Variable Speed Control
- Dual Hydraulic Drive For Increased Throughput
- Feed Impact Bars
- Galvanised Steel Covers
- Dual Power: Electric & Diesel/Hydraulic Power Unit
- PVC Covers
- Feedboot Hardox Wareplates
- Pull Cord Emergency Stops
- Feedboot Mild Steel Wear Plates
- 15 Tonne Capacity Hopper
- Feedboot Extensions
- Radio Remote Control
- Remote Variable Speed Belt Speed Control



### Specifications

Operational Length	24M (79')
Operational Height	9.02M (29'7")
Loading Height	1.48M-2.46M (4'9"-8'3")
Hydraulic Tank Capacity	377 l (83 Gallon)
Diesel Fuel Capacity	216 l (48 Gallon)
Engine	Caterpillar
Engine Power	55kw (74HP)
Transport Width	2.25M (7' 4")
Transport Height	2.5M (8' 2")
Transport Length	12.2M (40' 3")
Total Weight	11470 kgs (25234 lbs)

Due to policy of continuing product improvements, Specifications are subject to change without notice or obligation. No representation is made that the products depicted herein comply with any laws, codes, rules, regulations or standards. Compliance is the responsibility of the user. Additional safety equipment may be required by the particular location and application of product.

205A Concession Road, Crossmaglen, Newry, Co. Armagh, BT35 9JD, Northern Ireland,  
+44 (0) 2830868833 | sales@roco9.com | www.roco9.com