

TRP + ENGINE UNIT ON TRACKS

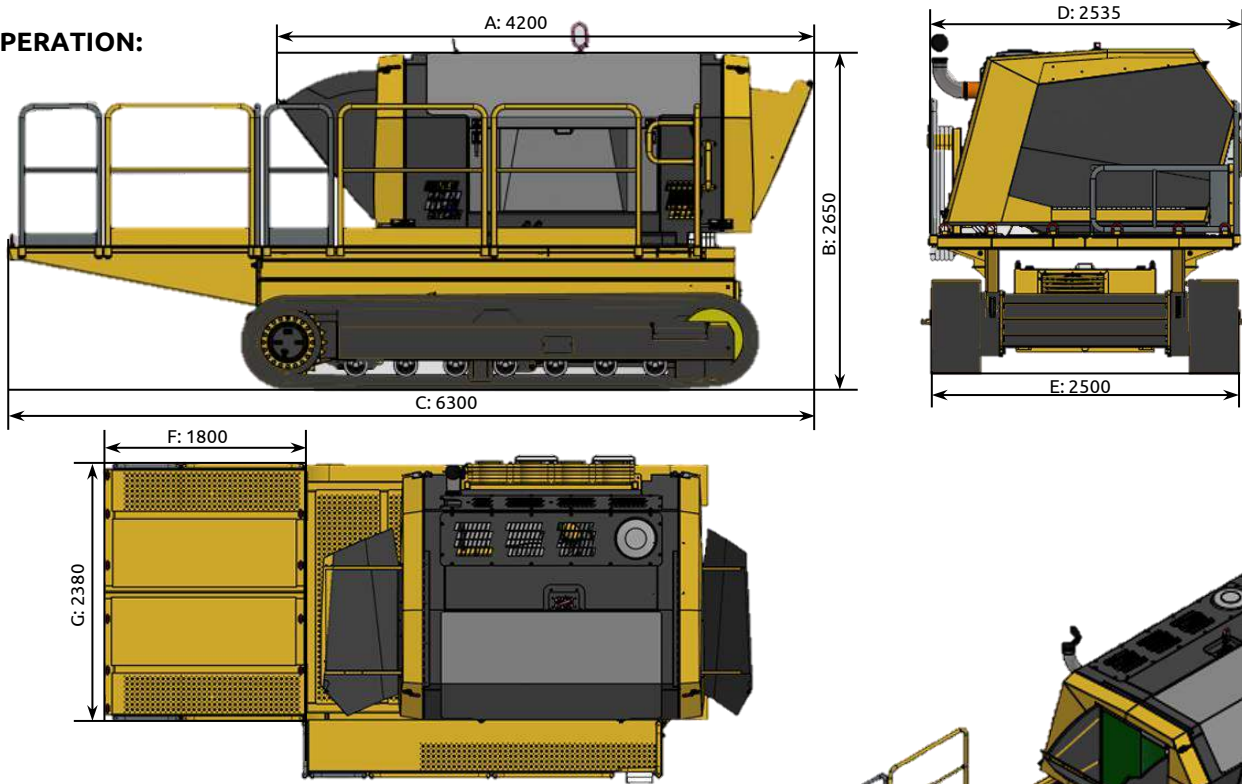


M3 _e : 04 l engine (123 kW; 200 kVA)
M3 _e : 06 l engine (202 kW; 300 kVA)
M3 _e : 09 l engine (....)
M4 _e : 09 l engine (251 kW; 325 kVA)
M4 _e : 12 l engine (316 kW; 450 kVA)
M5 _e : 12 l engine (352 kW; 450 kVA)
M6 _e : 15 l engine (423 kW; 550 kVA)
M7 _e : 18 l engine (525 kW; 550 kVA)



DIMENSIONS

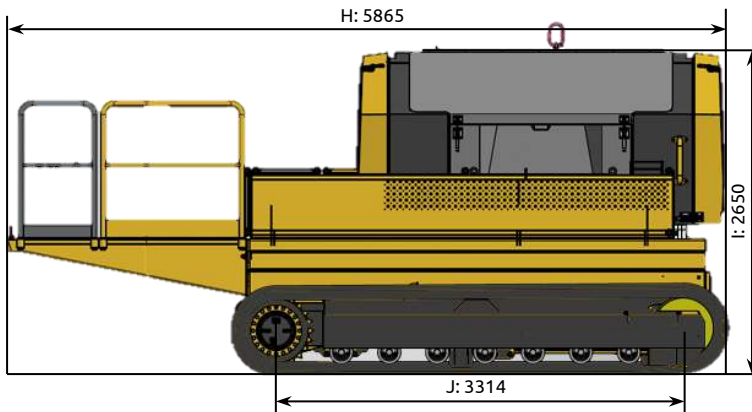
OPERATION:



Weight: approx. 9 t (without options)

Transport width: 2.500 mm (8'2")

TRANSPORT:



REMARK: All pictures might show options, not included in the scope of supply

A	B	C	D	E	F	G	H	I	J
4200	2650	6300	2535	2500	1800	2380	5865	2650	3314
13'9"	8'8"	20'8"	8'4"	8'2"	5'10"	7'10"	19'3"	8'8"	10'10"

TECHNICAL SPECIFICATION

1) ENGINE UNIT (DROP – OFF)

EU = Europe / US = United States
REM = ROW - Rest of World (except China and India)

Legend:
(a) = actual; (s) = standard; (o) = optional

- Diesel Motor, Type a) CUMMINS L9 (EU + US) - (s) p/n P100236
- Emission control Tier 4f; EU STAGE V; DOC / SCR / DPF
- Power ISO 14396 251 kW @ 1.500 R.P.M.; 283 kW @ 1.800 R.P.M. (341 / 385 hp)
- Max. torque 1.795 Nm @ 1.400 R.P.M. (1.324 lbft)
- Motor revolution 1.500 R.P.M. up to 1.800 R.P.M.
- Bore hole/stroke 114 x 145 mm
- Combustion chamber 8.900 cm³ (543 cuin)
- Voltage 24 Volt (for improved cold start properties)
- Cooling Combi cooler (water, air) with fan ø 800 mm, max. 1.600 R.P.M.
- Fuel 450 Litres stainless steel; acc. to EN 590 (119 gal)
- Air filter Cyclone pre-filter + dual stage fine filter

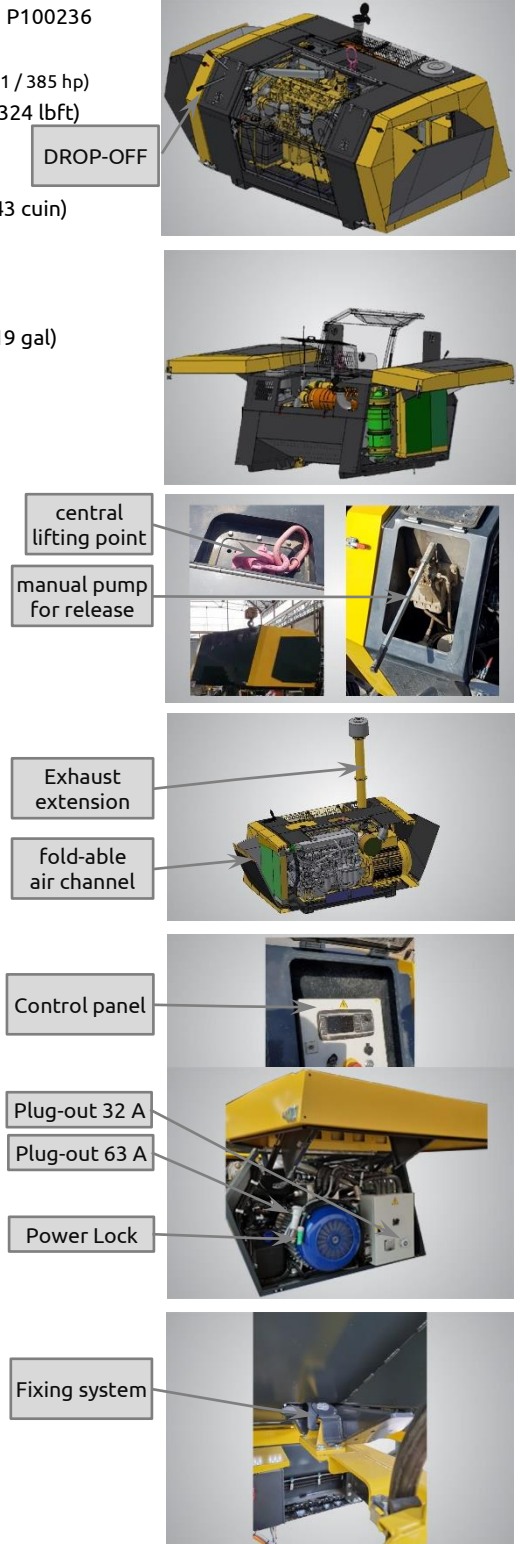
- Alternator 400 V; 50 or 60 Hz, 325 kVA; IP 67
- Power Plug-out For drive of the crusher, a POWER LOCK plug-out is foreseen: 3 Phases, 400V; 50 Hz; 450 kVA (660 A)
In addition, a plug out for service 3 Phases, 400V; 50 Hz, 32 A and a plug-out for working machines 3 Phases, 400V; 50 Hz, 63 A is foreseen

- Set up on working machines The diesel genset can be set up on working machines which are provided for this. (DROP - ON / DROP - OFF).
Releasing is done via a manually operated hydraulic pump. A central lifting point is provided for attached lifting equipment.

- Control 4,3" Display with control panel
- Exhaust Extension included in scope of delivery
- Air inlet / Air outlet Fold-able air inlet/outlet channel

ATTENTION

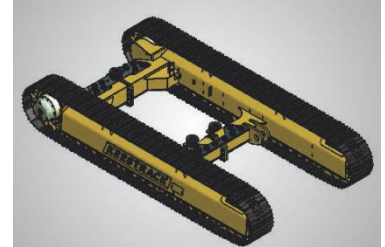
Engine warranty expires in case non genuine Keestrack filters are used!



TECHNICAL SPECIFICATION

2) TRACK - UNIT

- Length	3.314 mm	(10'10")
- Width track shoe	400 mm	(1'4")
- Total width	2.500 mm	(8'2")
- 2 speeds	1,1 km/h and 2 km/h	(0,7 / 1,2 mph)
- Drive	Hydraulic piston motor and planetary gears	



3) CONTROL

- Type	PLC – IP 67; dust and vibration proof	
- Display	LCD screen 4,3"	
- Operation	Control panel	
- Connection to other machines	Plugs are foreseen to transfer signals to foregoing and following machines to give signal "Ready for operation" and "Stop" in case following machine is not ready for operation.	



4) PLATFORM

Application	For adding a diesel tank up to 2.000 l	(528 gal)
-------------	--	-----------



